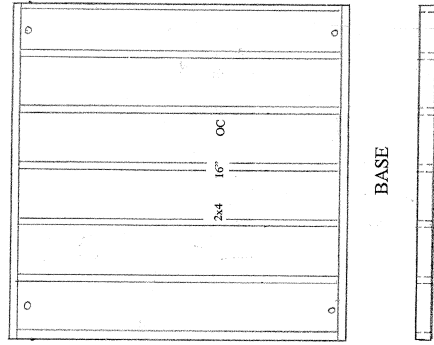
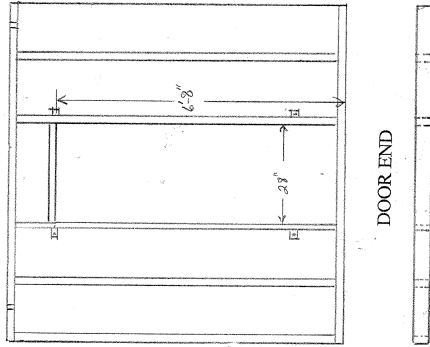


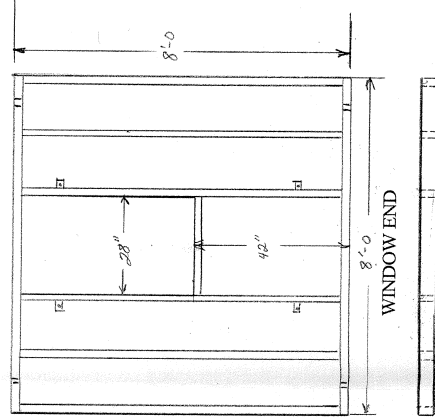
TOP



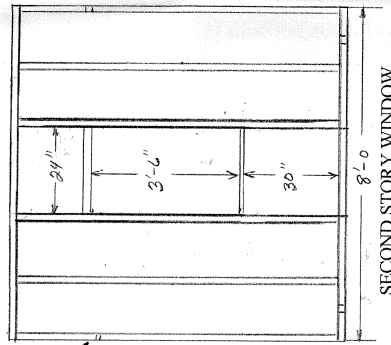
BASE



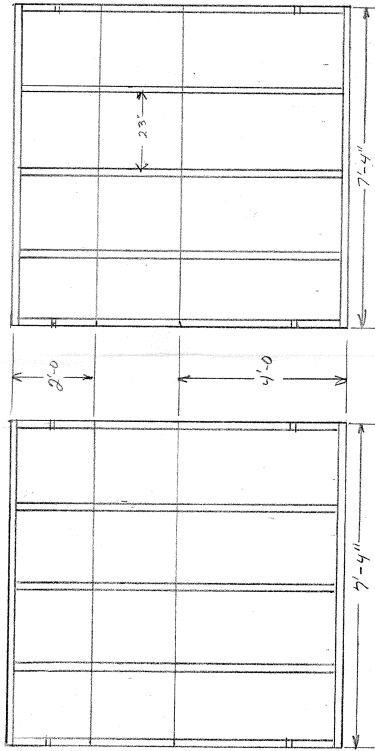
DOOR END



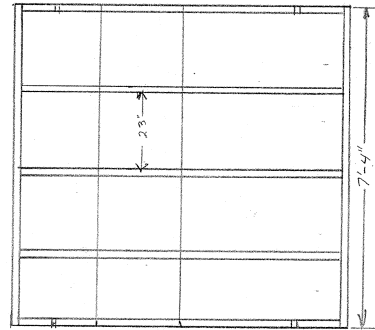
WINDOW END



SECOND STORY WINDOW

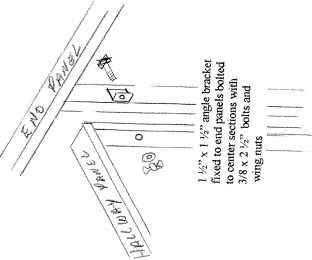


HALLWAY PANEL RIGHT



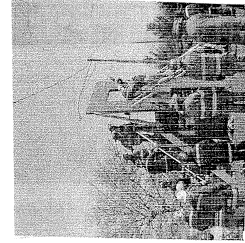
HALLWAY PANEL LEFT

*Can be
6 instead of 8'
for lower 10' tall
H.L. 15th*

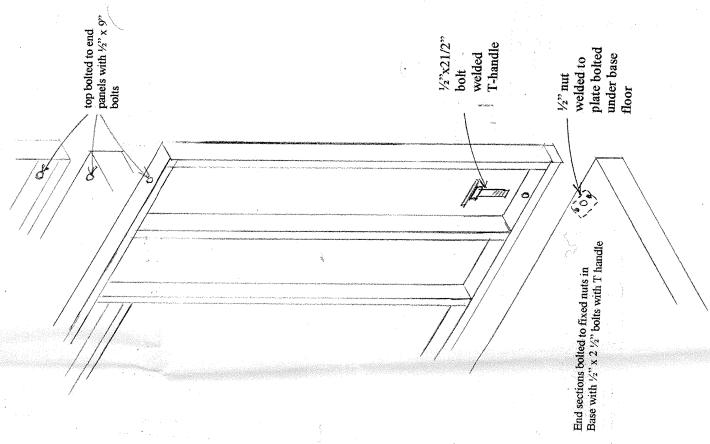


*1 1/2" x 1 1/2" angle bracket
fixed to end panels bolted
to center sections with
3/8" x 2 1/2" bolts and
wing nuts*

- MATERIALS**
- 8-2" x 4" x 8'
 - 48-2" x 4" x 8'
 - 2-2" x 4" x 10'
 - 2-2" x 4" x 10'
 - 3-2" x 12" x 16' premium grade ~~plywood~~
 - 3-2" x 12" x 12' ~~plywood~~
 - 14 sheets 1/2" CDX plywood
 - 8-5/8" x 2 1/2" bolts, washers, wing nuts
 - 16 x 1 1/2" x 1 1/2" angle iron
 - 44-1/2" x 9" bolts and nuts
 - 12 x 3/8" steel rod
 - 8-1/4" x 1 bolts and nuts
 - 20-3/8" x 3 1/2" carriage bolts and nuts
 - 20-3/8" x 1 1/2" ~~bolts~~ ~~carriage bolts~~
 - 1-5/8" square head deck screws
 - 2-1/2" square head deck screws
 - 6-10' 1 1/2" conduit
 - 6' x 1 1/2" conduit
 - 5' x 2 1/2" x 3/8" steel strap
 - paint (3 gallon)



*3/8" steel strap bent to hook over 2 x 6 and
under star support
railings sections 1 1/2" conduit bolted into
place with 3/8 x 3 1/2" bolts and n-bolts
railing 1 1/2" conduit*



*top bolted to end
panels with 1/2" x 9"
bolts*

*1/2" x 2 1/2"
bolt
welded
T-handle*

*1/2" nut
welded to
plate bolted
under base
floor*

*End sections bolted to fixed nuts in
Base with 1/2" x 2 1/2" bolts with T-handle*